

# What God's Love Shows Us About Being Human

**PRO TIP**  
Download other grades for alternate activities!

## CONNECTIONS TO THE CATECHISM OF THE CATHOLIC CHURCH

CCC 356, 358, 380

## MATERIALS

- ▶ [Word Tracing](#)
- ▶ Scissors, crayons, markers, and/or colored pencils

## CHRISTIAN ANTHROPOLOGY STANDARDS

K.2.2 TOB Recognize that the human person has a special relationship with God in comparison to animals.

(TOB 5-6; CCC 356, 358, 380)

## SUGGESTED TIME

20 minutes

## Teacher Background

The life of Jesus reveals to us what authentic love is. Though God created all things, only human beings are made in His image and likeness. Only human beings can give and receive love like God. Because of the Fall of our first parents, Adam and Eve, sin has damaged our ability to love like God. The Son of God, who created the world and everything in it with the Father and the Holy Spirit, came into the world in a special way. He assumed a human nature and became the Son of Mary so that we could have a special relationship of love with God and with each other. He became like us in everything but sin to save us from sin and teach us what true love is.



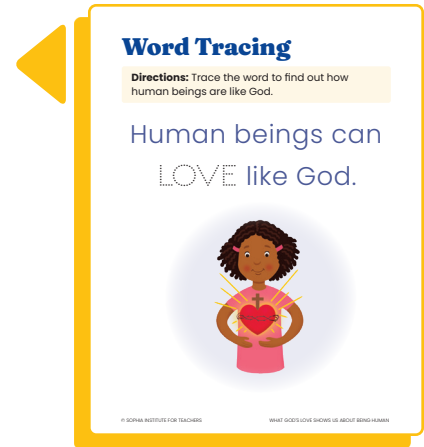
### HOW DOES THIS LESSON HELP INOCULATE STUDENTS AGAINST GENDER IDEOLOGY?

Gender ideology asserts that loving someone means engaging in or encouraging sinful behavior if it seems to provide temporary pleasure. But the truth Jesus shows us is that love is to freely make a gift of oneself for the good of another. Since we are made in God's image and likeness, we are called to love as He loves: to make a gift of self to others, and to love all those we encounter unconditionally.

## Activity

- A. Begin by having your class form a large circle. Have each student think of their favorite animal.
- B. When they are ready, have students take turns standing in the center of the circle to act out their animal using only their body and the sounds of the animal. The rest of the class should try to guess what animal it is. (You may choose to go first to give them an example.)
- C. When the game is over, ask your students to think of things that human beings can do that animals cannot. *Answers may vary.*
- D. Explain that one key difference between human beings and animals is that humans are free to love others like God loves.
- E. Ask the class if they think any animals are made in God's image and likeness. *No, they are not.*
- F. Explain that human beings have a very special relationship with God because we alone are made in His image and likeness. Jesus became man to show us how much God loves us, and He is our perfect example of what it means to really love in a way only human beings can.

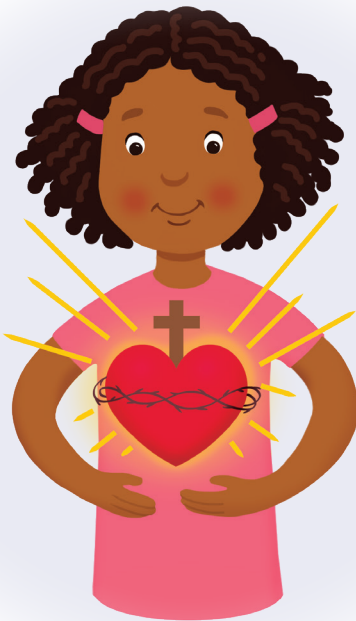
- G. Next, distribute the **Word Tracing** worksheet, and make crayons, markers, and/or colored pencils available. Explain that the word on the page spells out the most important thing that animals cannot do but human beings can.
- H. Have students trace the dotted letters on the worksheet and decorate the page as they wish.
- I. When they are finished, read the completed worksheet aloud to them: "Human beings can love like God."



# Word Tracing

**Directions:** Trace the word to find out how human beings are like God.

Human beings can  
LOVE like God.



**What  
God's Love  
Shows  
Us About  
Being  
Human**

# Word Tracing

**Directions:** Trace the word to find out how human beings are like God.

Human beings can  
LOVE like God.

